



**Unified Endpoint Security Management**  
Enforce, manage, and report on endpoints  
from a single console.

# Endpoint Policy Management

## YOUR CHALLENGE

Unprotected Endpoints put the entire business at risk of threats, data loss, and unauthorized access. To mitigate these risks, businesses implement Endpoint security, however, managing corporate endpoints can challenge security administrators in multiple ways. Admins must initially create policies to enforce security on endpoints for multiple users and devices. Managing such policies for desktops, laptops, Macs, and other devices while also engaging and educating the user can become complicated. Different risks require different tools to manage and enforce endpoint policies. Additionally, admins typically must manage different policies for different groups while ensuring compliance of endpoints and corporate policy. Managing so many different aspects requires more admin time, effort, and thinking to execute well. To help reduce user confusion and security policy awareness, admins must educate end users on corporate policy. The need for unified management to enforce, manage, and report on endpoints in a straightforward manner has been out of reach of many administrators...until now.

## OUR SOLUTION

Simplifying security administrator's management and enforcement experience, Check Point Endpoint Policy Management gives security administrators the power to enforce, manage, report, and educate users under one console. With a customizable management dashboard, administrators have maximum visibility on the specific security areas important to the organization and take the steps to deploy and remediate endpoints to be in compliance with company policy.

## SECURITY MANAGEMENT

### Unified Endpoint Security Management

A full suite of Endpoint Security Software Blades for PC and Mac are managed under one console and server by the Endpoint Policy Management Software Blade. Manage both network and endpoint policies on one management appliance.

### Set your organizational security policy

Straightforward policy language makes for an intuitive experience when deploying and managing policies. The Endpoint Policy Management Software Blade provides granular user security, in addition to associated machines from a single console.

## PRODUCT BENEFITS

- Manage Endpoint and Network Security from one management appliance
- Maximum visibility and control of security and at-a-glance dashboard
- Easy policy writing with a straightforward policy language focused on business processes
- Search for security events across network and endpoints

## PRODUCT FEATURES

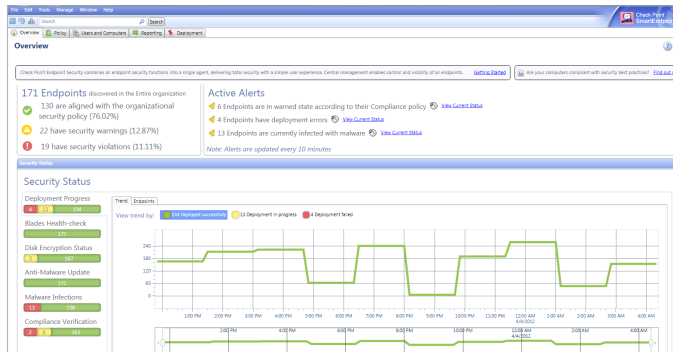
- Single management platform for network and endpoint security
- Dashboard with overall organizational security view
- Manage Security for PCs and Macs
- Single Console and Customizable At-a-Glance Dashboard managing 6 Endpoint Software Blades



## Datasheet: Endpoint Policy Management

### Complete visibility into your company's security picture

See security status and alerts of multiple software blades in one location. Get a full analysis of your endpoint security posture with the SmartEvent software blade for Endpoint security.



### Granular User Security

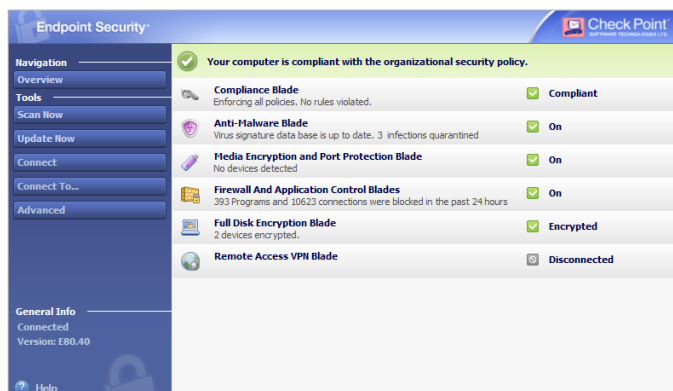
The Endpoint Policy Management Software Blade provides granular user security, in addition to associated machines, from a single console.

### Integrated into Check Point Software Blade Architecture

The Endpoint Policy Management Software Blade is fully integrated into the Software Blade architecture, saving time and reducing costs by allowing customers to quickly expand security protections to meet changing requirements.

### ENDPOINT SECURITY SOFTWARE BLADES

Endpoint Security Software Blades bring unprecedented flexibility, control and efficiency to the management and deployment of endpoint security. IT managers can choose from six Endpoint Software Blades to deploy only the protection needed, with the freedom to increase security at any time.



### Full Disk Encryption

Automatically and transparently secures all information on endpoint hard drives. Multi-factor pre-boot authentication ensures user identity.

### Media Encryption

Provides centrally enforceable encryption of removable storage media, with the granularity to encrypt only business related data while engaging and educating the end user.

### Remote Access VPN

Provides users with secure, seamless access to corporate networks and resources when traveling or working remotely.

### Anti-Malware and Program Control

Efficiently detects and removes malware from endpoints with a single scan. Program Control assures that only legitimate and approved programs run on endpoints.

### Firewall and Security Compliance Verification

Proactive protection for inbound and outbound traffic prevent malware from infecting endpoint systems, block targeted attacks and stop unwanted traffic. The Security Compliance Verification assures that your endpoints will always meet the organizational security policy required.

### WebCheck Secure Browsing

Protects against the latest web-based threats including drive-by downloads, phishing sites and zero-day attacks. Browser sessions run in a secure virtual environment.

## SPECIFICATIONS

### Management Platform Support

#### SMART-1 5, 25, and 50

- Gaia R75.40
- SecurePlatform R75.40

#### OPEN SERVER

- All editions of Microsoft Windows Server 2003 and 2008
- VMware vSphere 4.0, 4.1, 5.0
- VMware ESXi 4.1.0, 5.0

### Endpoint Security Client Operating Systems

- Microsoft Windows 8 Enterprise and Professional 32/64-bit
- Microsoft Windows 7 Enterprise, Professional, Ultimate editions 32/64-bit (or greater, e.g. SP1)
- Microsoft Vista 32/64-bit
- Microsoft Windows XP Professional 32-bit, SP3
- Windows Server 2008/2008 R2 (32 & 64-bit) — Malware Protection/Firewall/Compliance
- Mac OS X 10.8, OS X 10.7, OS X 10.6 — Firewall/Compliance/VPN/Full Disk Encryption

## CONTACT CHECK POINT

### Worldwide Headquarters

5 Ha'Solelim Street, Tel Aviv 67897, Israel | Tel: 972-3-753-4555 | Fax: 972-3-624-1100 | Email: info@checkpoint.com

### U.S. Headquarters

959 Skyway Road, Suite 300, San Carlos, CA 94070 | Tel: 800-429-4391; 650-628-2000 | Fax: 650-654-4233 | www.checkpoint.com